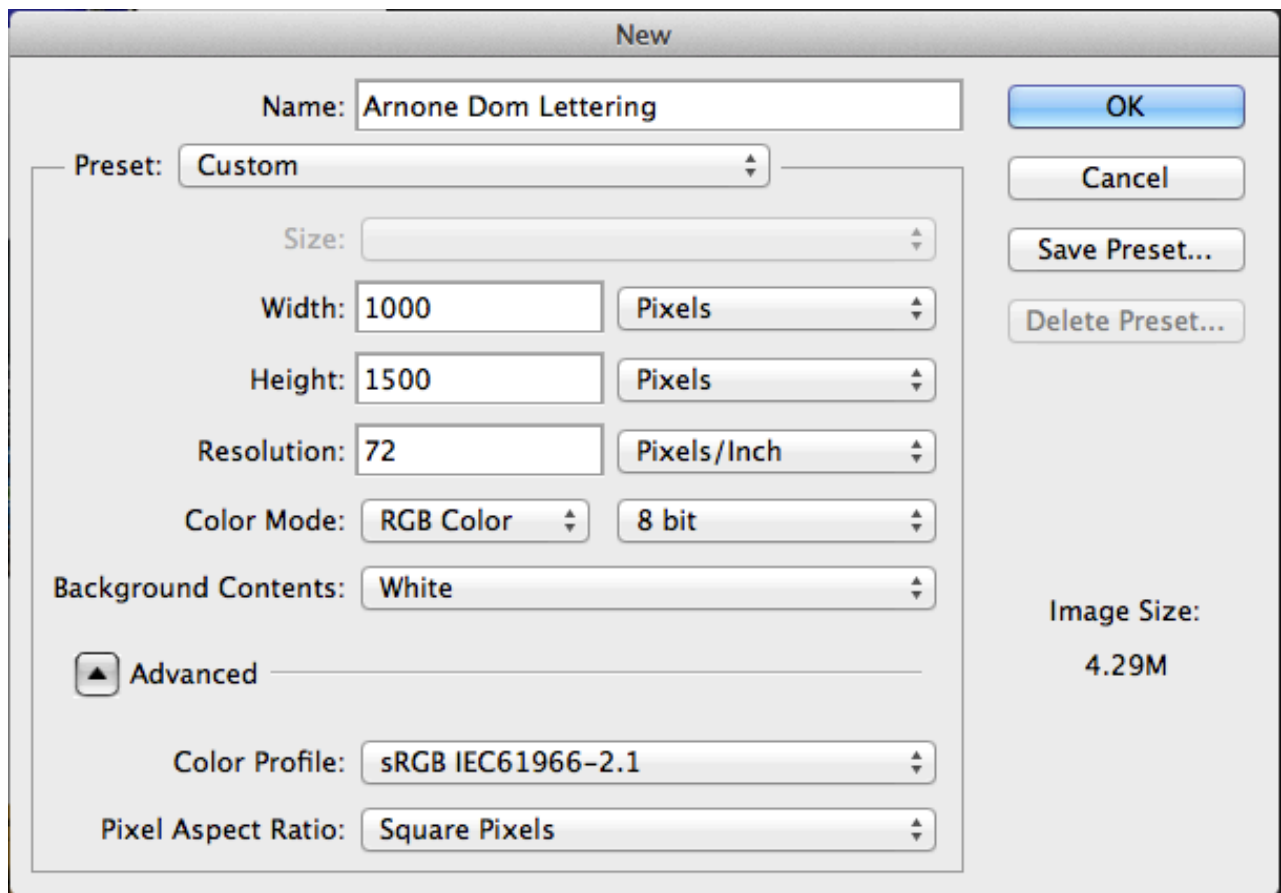



Lettering Tutorial

In the lettering project, we'll be changing the letters in your name to each contain an image that represents you. In this project, you will need to maintain the order of layers, align elements, place and resize images, and use the selection tool and crop tool.

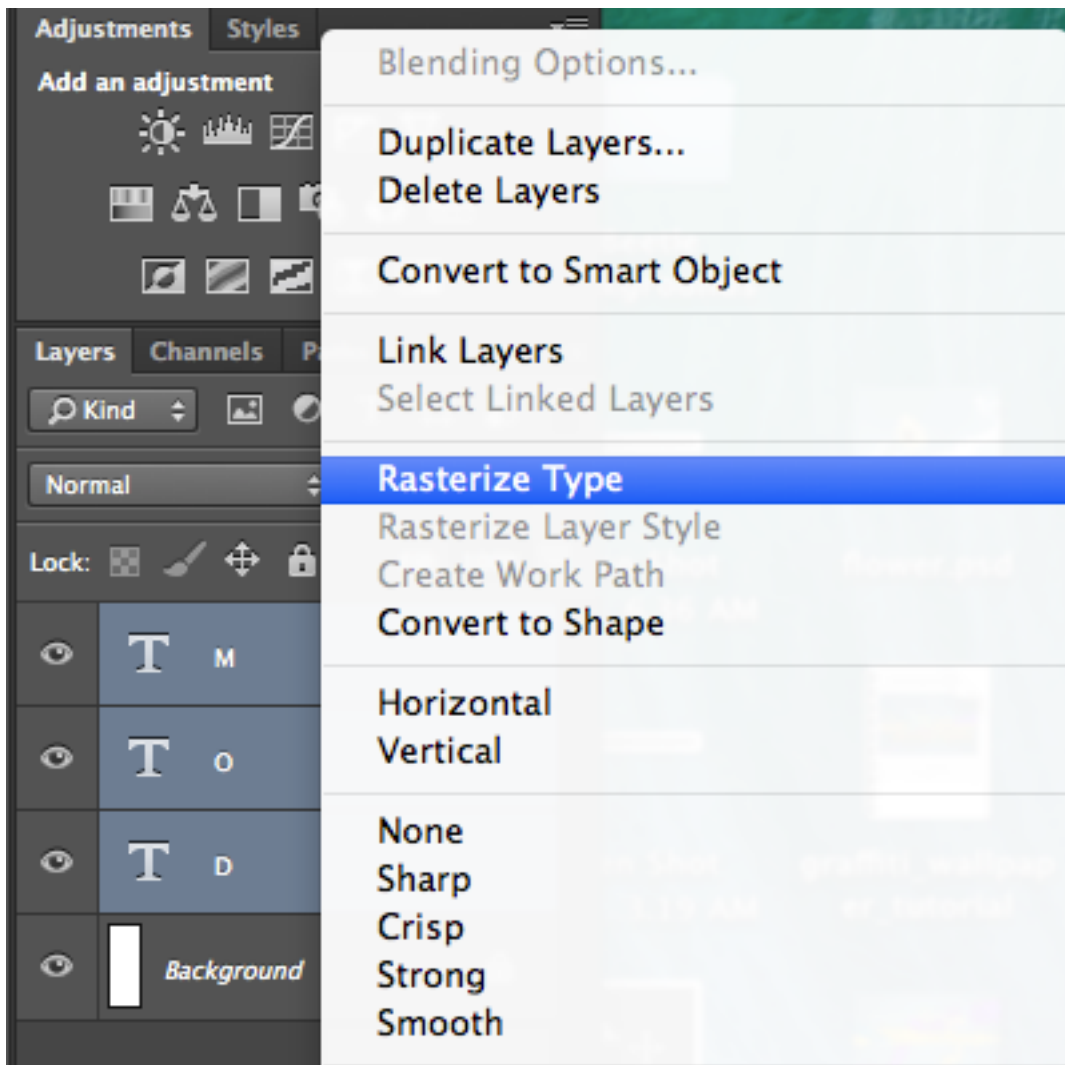
1. Open Adobe Photoshop CC 2017 from the dock at the bottom of the screen. If Photoshop is not located on the dock, click on the Finder and look under "Applications"
2. If the new file window does not pop up when you start Photoshop, click "File" on the top bar and click "New Blank Document" (Or press Command+N on your keyboard, this is a handy shortcut.)
3. Name the file "YourLastname+YourFirstInitial+LetteringProject" and set the width to 1000 pixels and the height to 1500 pixels. Check the image below and make sure that yours resembles the example. Again, make sure that you've selected Pixels and **NOT** Inches.




4. Select the type tool () from the toolbar on the left side of the Photoshop window.
5. The properties bar at the top of the screen will change to reflect the new tool selected. The font will be 'Myriad Pro' by default. Click that dropdown menu and change it to either Arial Black, Impact, or another wide-font, whichever you prefer. Set the font size to at least 200 pt. The font size may vary depending on the number of letters you have chosen to do or your preference. Do not worry about filling up the whole canvas, you can crop it at the end.



6. Click somewhere on your canvas and type your first letter. This will create a new layer which you can see in the layers panel on the bottom right section of the Photoshop window.
7. Press cmd+return to exit typing mode then click somewhere else on the canvas to create a new type layer and type your next letter.
8. Repeat step 7 until you have **ALL** of your letters on the canvas.
9. Click on the top-most layer of the layer panel and then hold Shift on your keyboard and Left click the layer at the bottom of the layer panel (not including the background layer, **ONLY** the letter layers) This should highlight every text layer you just made. Now, right click on any one of the selected layers and click "Rasterize Type" from the dropdown menu that pops up.



10. Once all of your letters are on the canvas, select the move tool () on the toolbar on the left side of your screen.

11. Click on your first letter and move it to the position where you want it.

12. Align the rest of your letters as you like. The snap feature is turned on by default and causes your objects to align automatically, this will help you with basic alignment. You can also use the arrow keys to make fine adjustments to the position of your letters.

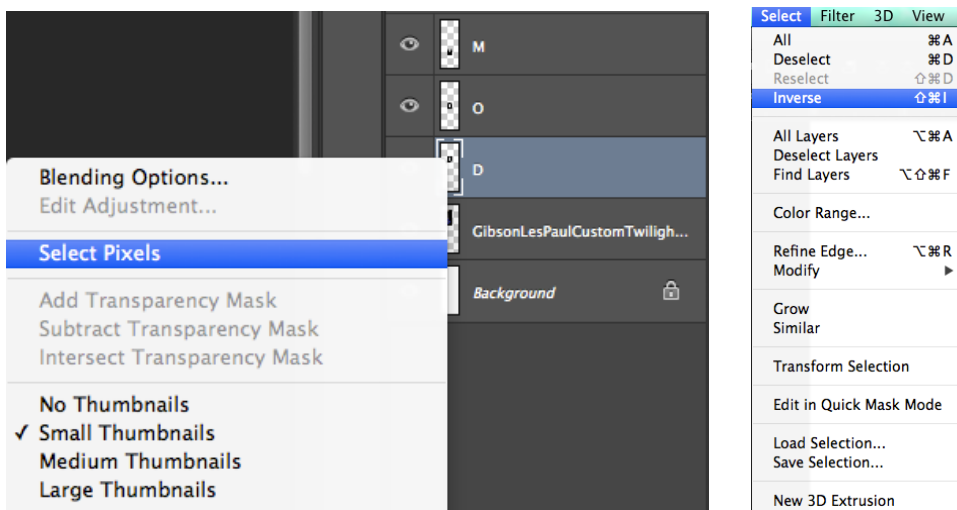
13. Once your letters are aligned, find images that tells me something about yourself and drag it to the desktop to save it to the computer (if you use Google images, make sure you click "view image" and get the full sized image rather than the thumbnail).

14. Click on "File" on the top menu bar, then click on "Place Embedded.."in the dropdown window. In the file window that pops up, click on Desktop as your location to locate your image file that you just downloaded and double click it to place it in Photoshop.

15. When you place the image, it will be in transform mode. This allows you to resize, move, or rotate the image. Resize and move the image with the part of it you want displayed over the letter. Press Return when you have it positioned. If you do not like the positioning, you can enter transform mode again by pressing cmd+T.

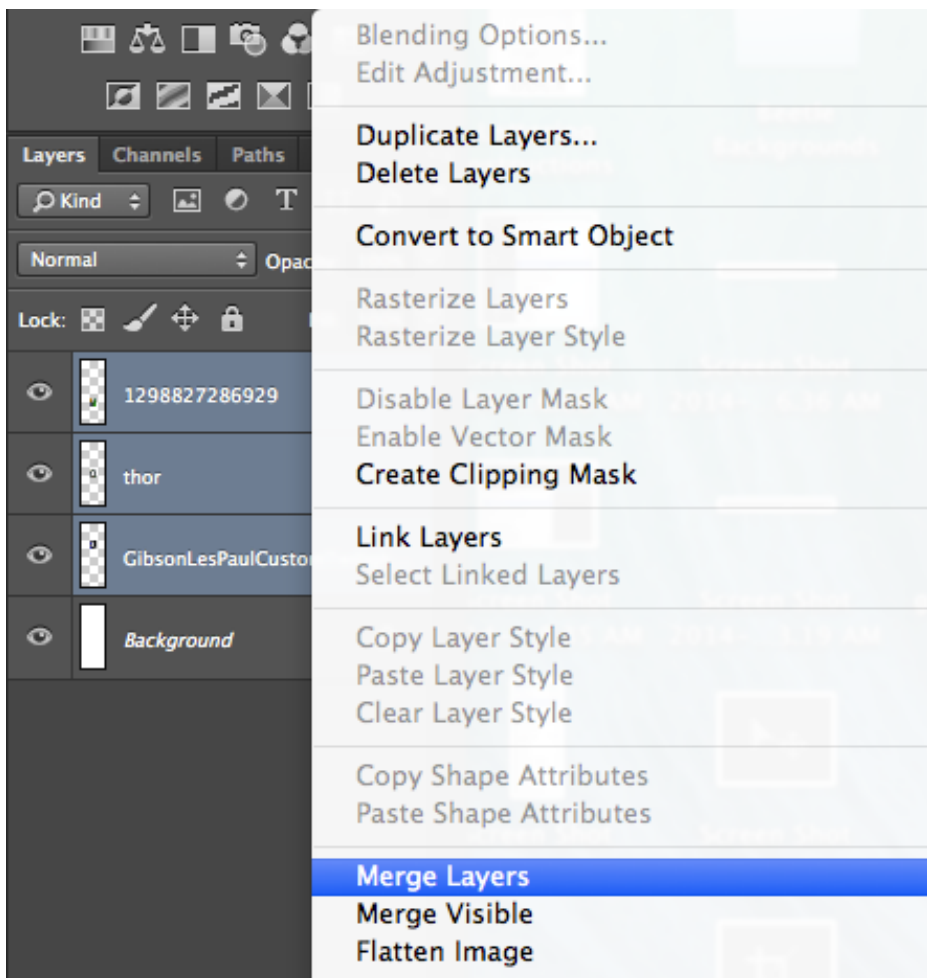
16. Right click the layer that was created when you placed the image and select "Rasterize Layer" to make it editable.


17. In the layer panel, right click the small image/icon of the text layer you're trying to work with. This will make a selection of the letter that is on that layer. You can also do this through a shortcut by holding the Command key on your keyboard and clicking the small image.



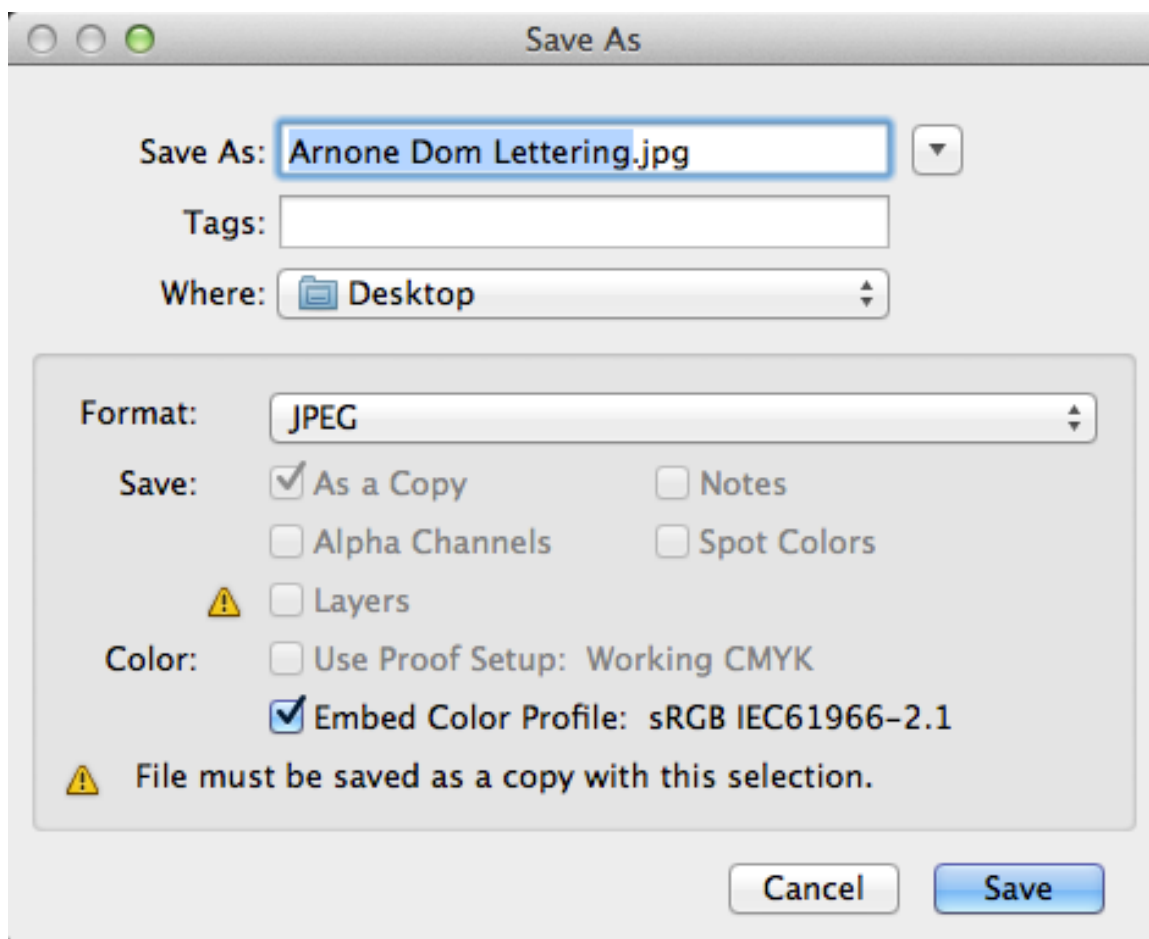
18. In the Layer Panel, click on the layer of the image you placed and then go up to the Layers Menu on the Menu Bar (Top of the Screen) and click on Inverse. The keyboard shortcut for this is Command+Shift+I.

19. Press the backspace key and only the parts of the image placed over the letter should remain in the shape of the original letter.
20. Repeat steps 13-19 for each letter using a different image for each one.
21. Select all of the text layers (not the image letters) and delete them by pressing backspace or dragging them to the trashcan at the bottom of the layer panel.
22. Click the top layer then shift+click the lowest remaining layer (not including the background) to select all layers.
23. Right click any of the layers and click Merge Layers from the dropdown menu.



24. When you are finished, select the crop tool () from the toolbar on the left.

25. Using the little black boxes that appear on the edges and corners of the image, remove excessive white space. Do not crop too tightly, having some white space is important.
26. Click “File” on the bar at the top and click “Save as...” Change the format to JPEG, Change the "Where" Dropdown Menu to Desktop and finally make sure that the name of the final file is “Lastname FirstInitial Lettering”. Click the Save Button.



27. Submit the file on QTL Moodle under the Project Submission section. You will see a project submission link for "Photoshop Lettering Tutorial".