

# How to work with clips in the Timeline panel

One of the beauties of Adobe Premiere Pro CS6 is how easily you can add clips anywhere in a sequence, move them around in a sequence, or remove them altogether. In this guide you will add a few clips to a sequence, place other clips within that collection of clips, remove clips, and rearrange clips within a sequence.

## Adding a clip to a sequence

Adobe Premiere Pro provides three basic ways to add a clip or a group of clips to a sequence in the Timeline panel. In this guide you'll use only one: dragging clips from the Project panel. You already used the method of automating to sequence when you created a storyboard in the Project panel. Later you will use the Source Monitor to add clips to a sequence.

Adding clips to an empty sequence or after the end point of other clips in a sequence is straightforward—a simple drag-and-drop.

On the other hand, when you drag clips onto other clips in a sequence, you need to consider what will happen to those other clips. There are two basic approaches:

- *Overlay*: Replaces (deletes) any frames already in a sequence, starting from the edit point and extending for the length of the clip. This is the default behavior.
- *Insert*: Does not replace any clips or frames. This method adds the new clip and moves the clips after the insertion point to the right. The insert method uses a keyboard modifier. You hold down Ctrl (Windows) or Command (Mac OS) when you place the clip in the sequence.

## Removing a clip from a sequence

Adobe Premiere Pro provides three basic ways to remove clips. In this guide you will use the Delete key and the mouse. Later you will use the Program Monitor clip-editing feature. You can remove a clip from a sequence in two ways:

- *Lift*: Leaves a gap where the clip used to be. This is the default behavior.
- *Extract*: Clips to the right of the removed clip move over to fill the gap. Extract uses the Ctrl (Windows) or Command (Mac OS) keyboard modifier.

You can combine these actions. For example, you can lift a clip and insert it elsewhere in the sequence or extract a clip and overlay it elsewhere. You try various combinations in this guide.

## Adding clips to a sequence

Adding clips to an empty sequence or after the end point of other clips in a sequence is a straightforward drag-and-drop.

To add clips from the Project panel by dragging:

1. Start Adobe Premiere Pro CS6 and open a saved project.
2. Select File > New > Sequence.

The New Sequence dialog box appears (**Figure 1**).

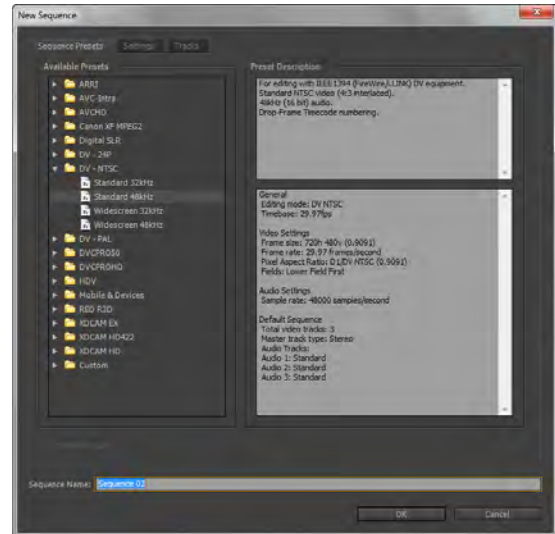
**Note:** The New Sequence dialog box allows you to select presets to match the source footage you are editing. It also allows you to select custom settings and modify the number of audio and video tracks in the new sequence.

3. Give the sequence a name of your choosing and click OK.
4. Drag a video clip from the Project panel to the beginning of the newly created sequence in the Timeline panel.
5. Select three video clips in the Project panel and drag them as a single unit directly after the clip you already added to the sequence.

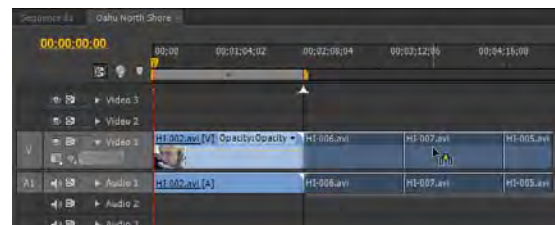
**Note:** The three clips line up in the sequence in the order in which they appear in the Project panel.

6. When you see the vertical black line indicating the clips will butt up against the previously added clip, release the mouse button (**Figure 2**).

**Note:** As you dragged the two clips close to the end of the previously added clip, you might have noticed the left side of the left-most clip suddenly jump to the end of the first clip. That's the Adobe Premiere Pro snap feature. Snap automatically aligns clips with (snaps them to) the edge of another clip, the start and end of the time ruler, or the current-time indicator.



**Figure 1** New Sequence dialog box



**Figure 2** Snap feature with vertical black line

## Making an overlay edit

An overlay replaces (deletes) any frames already in a sequence, starting from the edit point and extending for the length of the clip. This is the default behavior.

To make an overlay edit:

1. Continue where you left off in the previous task.

There should be four clips in the sequence. Depending on the length of each clip, you may be able to see some or all of the clips in the Timeline. You can zoom out in the Timeline to see more clips at once. Or, you can zoom in extremely close for more precise editing.

2. To zoom in, drag the handle at the right end of the horizontal scroll bar (below the Timeline) to the left (**Figure 3**). To zoom out, drag the handle to the right. Adjust the zoom so that all four clips expand until they fit the width of the visible area in the Timeline.

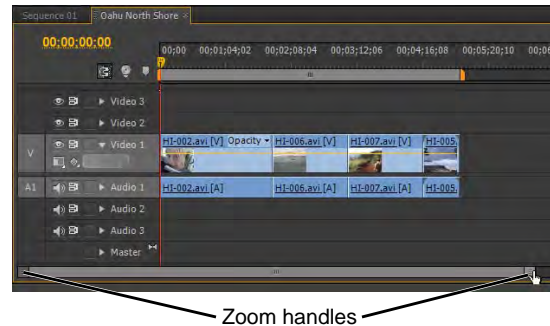
**Note:** You can also drag the handle on the left of the scroll bar to zoom the Timeline.

3. Drag a video clip from the Project panel to the sequence so its first frame (left edge) is approximately in the middle of the first clip (**Figure 4**).

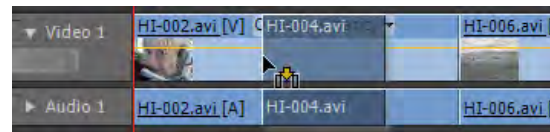
**Note:** The Program Monitor shows two images (**Figure 5**). The left view is the new out point (end) of the clip that precedes the newly placed clip. The right view is the new in point (beginning) of the clip that follows the newly placed clip.

4. Release the mouse button to place the new clip in the sequence.

In steps 3 and 4 you performed an overlay edit, covering the video and audio that were already there. Your sequence remains the same length.



**Figure 3** Zoom controls in the Timeline panel



**Figure 4** An overlay edit



**Figure 5** Program Monitor display of overlay edit

In the remaining sections of this guide, you work with a set of four clips in a sequence. Because your work on previous tasks altered those clips in some way, you need to start fresh by using one of the following methods:

- Delete all the clips in the sequence and drag four clips from the Project panel back to the Timeline panel.
- Select Edit > Undo enough times (usually only once) to undo whatever edits you just completed.
- Click the History tab (or select Window > History) to show the History panel and click the Create 'Your sequence name' line to return to the point after you created a new sequence. Drag four clips to that sequence.

## Making an insert edit

An insert edit does not replace any clips or frames. This method adds the new clip and moves the clips after the insertion point to the right. The insert method uses a keyboard modifier. You hold down Ctrl (Windows) or Command (Mac OS) when you place the clip in the sequence.

*To make an insert edit:*

1. Use one of the three described methods to set up a four-clip sequence.
2. Hold down Ctrl (Windows) or Command (Mac OS) and drag a video clip from the Project panel to the middle of the first clip (**Figure 6**).
  - When you press Ctrl (Windows) or Command (Mac OS), just before you drop the clip in its new location a dotted vertical line with gray triangles appears (**Figure 6**). These indicate you are making an insert edit.
  - The insert edit slices the original clip in two, sliding its second portion and all subsequent clips to the right and inserting the video clip in the sequence.
  - Your sequence is now longer.



**Figure 6** An insert edit

## Using the Delete key and Ripple Delete commands

When you delete clips in a sequence, you can press the Delete key, which leaves a gap in the sequence, or use Ripple Delete, which automatically closes the gap created by the deleted clip.

*To delete clips using the Delete key and Ripple Delete:*

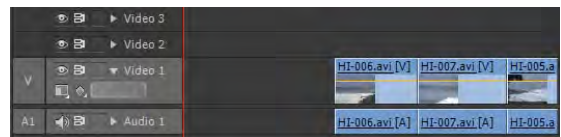
1. Set up a four-clip sequence.
2. Click the first clip in the sequence to select it and press Delete.
 

The clip disappears from the sequence and leaves a gap (**Figure 7**).
3. Select Edit > Undo.
 

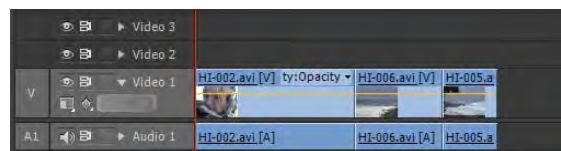
Notice, there are still four clips in the Timeline with no gap between clips.
4. Click the third clip in the sequence to select it and select Edit > Ripple Delete.

The clip disappears and the fourth clip slides to the left to close the gap (**Figure 8**).

**Note:** Ripple Delete works on both clips and gaps in a sequence. To see how that works, delete the first clip again, click the gap where the first clip used to be to highlight it, and select Edit > Ripple Delete.



**Figure 7** Deleting a clip



**Figure 8** Using Ripple Delete

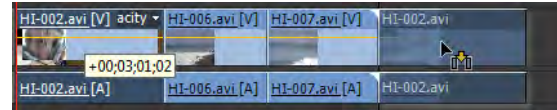
## Creating a lift and overlay edit

Lift and overlay leaves a gap where the clip originated, and when you drop the clip at the edit point, the overlay replaces any video frames below it.

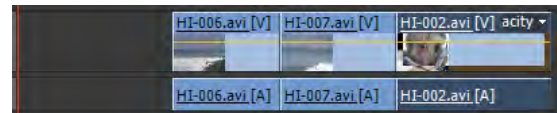
*To create a lift and overlay edit:*

1. Set up a four-clip sequence.
2. Drag the first clip until its left edge lines up with the edit point between the third and fourth clips (**Figure 9**), and then release.

**Note:** Because you did not use Ctrl (Windows) or Command (Mac OS), you created a lift and overlay edit. Lifting the first clip left a gap. The overlay clip replaces any video frames below it (**Figure 10**). The sequence is shortened.



**Figure 9** A lift and overlay edit



**Figure 10** Gap created by lift and overlay edit

## Creating an extract and overlay edit

When you perform an extract and overlay the clips slide over to fill the gap created by the clip being moved, and when you drop the clip at the edit point, the overlay replaces any video frames below it. The sequence is shortened.

*To create an extract and overlay edit:*

1. Set up a four-clip sequence.
2. Ctrl-drag (Windows) or Command-drag (Mac OS) the first clip to the center of the third clip (**Figure 11**), release the modifier key, and drop the first clip there.

**Note:** You performed an extract and overlay edit. Clips slide over to fill the gap left by the removed first clip (the modifier key performed a ripple delete). And because you did not use a modifier key when you put that clip in its new location, you did an overlay edit (**Figure 12**). The sequence is shortened.



**Figure 11** An extract and overlay edit



**Figure 12** Result of the extract and overlay edit

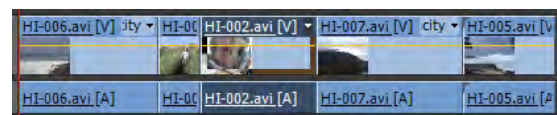
## Creating an extract and insert edit

This time when you drop the clip, the other clips slide to the right, making room for the clip you are moving.

*To create an extract and insert edit:*

1. Set up a four-clip sequence.
2. Ctrl-drag (Windows) or Command-drag (Mac OS) the first clip to the center of the third clip, continue holding down the modifier key, and drop the clip there.

**Note:** You performed an extract and insert edit (**Figure 13**). Clips slide over to fill the gap left by the removed clip, and the clips after the new insert edit point slide to the right. The sequence remains the same length.



**Figure 13** Result of the extract and insert edit